

**HEIN STUDIO**

catalog

making everyday extraordinary

[www.heinstudio.com](http://www.heinstudio.com)



## About HEIN STUDIO

Our Purpose is to elevate the frame for life by making everyday objects extraordinary.

We challenge the value of the ordinary in everyday life and elevate the frame for life by making everyday objects extraordinary. By stimulating our senses aesthetically with extraordinary objects, that are functional and timeless, we can contribute to people's well-being. By approaching design in a new way, where functional design becomes extraordinary. All objects are carefully curated to bring value to peoples everyday life.



We aim to simplify good choices and influence positive change in our industry. We create extraordinary objects that our customers will be able to use and love for generations.

By presenting a broad collection of well-considered designs under one roof, we want to inspire people to live a more sustainable life.



Hein Studio was founded in 2016 by fashion Designer and Artist Rebecca Hein and Construction Architect Brian Hein. With a shared interest in architecture and the way of living with design and art, it was the perfect foundation for creating something new and extraordinary that could last for generations to come. The couple together with their team push the boundaries to elevate a limitless brand universe.



The Brand is sold in selected interior and lifestyle stores worldwide, and in their own webshop.



## Kazumi Vase

Two serene pillars which are in perfect harmony. Kazumi means to be in Harmony and at Peace. A calm and sculptural statement piece that with every angle shows a new perspective, it creates a new experience depending on the light reflections.

Elevate your table, window or cabinet and use it with or without flowers as an art piece.



Each vase is made by handcasting and polished by hand to achieve a shiny surface.



Item no. / 1604

Name / Kazumi Vase

Size / H 19,5 W 10x16 cm

Material / Brass, nickel finish



Item no. / 1605

Name / Kazumi Vase

Size / H 19,5 W 10x16 cm

Material / Brass, nickel finish

# Ammonit Vase

Organic shapes of the sea creature Ammonite who lived 66 million years ago, and now only found in Fossils. Ammonit Vase was created with a fascination of combining the past and the present in a organic nature inspired design.

Each angle is unique and asymmetric as the ammonites shell. Its timeless yet modern shape is created to pay tribute to the beauty that once was.



Item no. / 1534  
Name / Ammonit Vase  
Size / H 30 W 26 cm  
Material / Glass - Clear



Item no. / 1536  
Name / Ammonit Vase  
Size / H 30 W 26 cm  
Material / Glass - New Smoke

## Ikebana Vase

Giving life to flowers is the exact translation of Ikebana. Ikebana was introduced in Japan in the 6th century. An Ikebana flower arrangement should contain aesthetic elements or a triangular structure that symbolizes heaven, earth and the humanity existing in harmony.

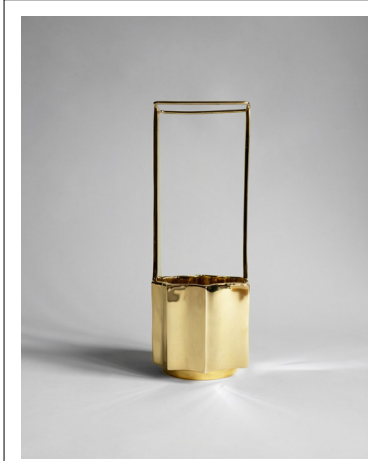
*"I designed ikebana vase from a fascination of giving life to a single branch or a few stems. Making it easy to arrange small art pieces at home"*



The Vase is made in solid brass and its shape is inspired by Japanese ceramics techniques giving each angle life when seen from a new perspective.



Item no. / 1606  
Name / Ikebana Vase  
Size / H30 x W10 cm  
Material / Brass, nickel finish



Item no. / 1607  
Name / Ikebana Vase  
Size / H30 x W10 cm  
Material / Brass

# Kyoto Collection

Introducing the Kyoto series. The collection is inspired by the Sagano bamboo forest in Kyoto. Exploring the magnificent bamboo forest the shape and structure of bamboo became a starting point for this collection.

*"My goal was to create a calm series which can be used in everyday life, but also for larger significant events. The lines that symbolize bamboo creates a beautiful, calm pattern when in use"*



Each item is mouthblown, giving each piece a unique handmade shape. Every design comes in two colors, clear and light green.



Item no. / 1523 / 1525  
Name / Kyoto Candleholder small/ large  
Size / H 9 W 10 cm / H 11 W 13 cm  
Material / Glass - Clear



Item no. / 1527  
Name / Kyoto Vase - Small  
Size / H 18 W 20x14 cm  
Material / Glass - Clear



Item no. / 1529  
Name / Kyoto Vase - Medium  
Size / H 20 W 11,5x11,5 cm  
Material / Glass - Clear



Item no. / 1524 / 1526  
Name / Kyoto Candleholder small/ large  
Size / H 9 W 10 cm / H 11 W 13 cm  
Material / Glass - Light green



Item no. / 1528  
Name / Kyoto Vase - Small  
Size / H 8 W 11 cm  
Material / Glass - Light green



Item no. / 1530  
Name / Kyoto Vase - Medium  
Size / H 20 W 11,5x11,5 cm  
Material / Glass - Light green

## Nami Collection

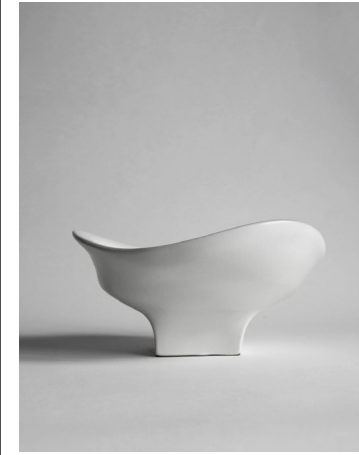
Nami collection is inspired by traditional Japanese ceramic crafts, a way of experiencing beauty in simplicity. With a touch of wabi-sabi the collection create a clam atmosphere for every space.

*" Exploring the geometric shapes, where a square meets a circle. I wanted to embrace and unite different geometric shapes and keep the clean and calm cut, with an element of surprise "*

Like the name Nami, meaning wave, each angle is asymmetric, like a wave. It creates a new perspective when turning the objects around. Making each angle unique but equally as beautiful. Glazed in a smooth white glaze, that soothes and brings lightness to any room.



Item no. / 1702  
Name / Nami Vase  
Size / H 25 W 20x20 cm  
Material / Ceramic



Item no. / 1708  
Name / Nami Bowl - Large  
Size / H 13 W 20x23 cm  
Material / Ceramic



Item no. / 1706  
Name / Nami Bowl - Small  
Size / H 13 W 14x14 cm  
Material / Ceramic

# Reflection Vase

Reflection vase is inspired by the cold mountain's lakes of Switzerland. The Reflection of the mountain in the water evokes a calmness and freshness. Every glass piece is handmade in one grand piece.



With a shape inspired by antique French florist vases and a structure inspired by a grand mountain reflection, it combines two unique forces. A mix of florist functionality and nature's calmness creates this unique center piece.

The mould is made in one grand piece and with each angle carved differently. It creates a new

perspective when turning the vase around. Making the vase equally as beautiful without flowers as with.

" I wanted to create something new, that was inspired by the antique French florist vases, That shape has captivated me for some time. I played with the idea with the vase being cut in two, reflecting in itself from a trip to Switzerland. I loved the calm aesthetic around the mountains lakes with the gigantic and brutal raw mountains " - Rebecca Hein

Each piece is mouth blown into a heavily carved steel mold. It takes 3 skilled glass artists to create each piece by hand.



Item no. / 1501  
Name / Reflection - Clear  
Size / H 30 W 24 cm  
Material / Glass



Item no. / 1502  
Name / Reflection - New Smoke  
Size / H 30 W 24 cm  
Material / Glass



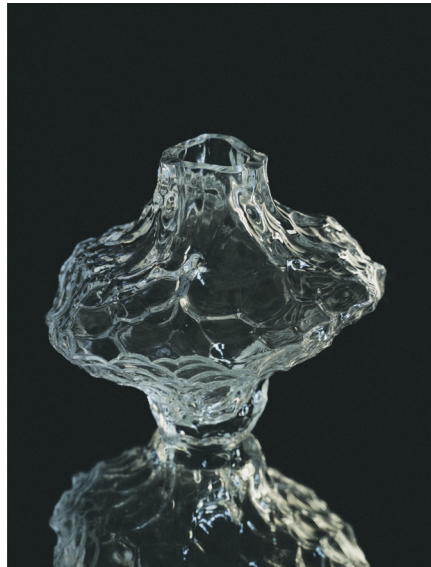
Item no. / 1520  
Name / Reflection - Metallic  
Size / H 30 W 24 cm  
Material / Glass



# Canyon Collection

Introducing the Canyon series. We elevate the extreme forces of nature. Inspired by canyons shaped by water floods, leaving a unique surface. Created to bring nature closer to home and add a artistic touch.

The idea for the Canyon Vase comes from the urge of creating a wabi-sabi vibe around a new glass vase. The shape of the vase is inspired by old vintage vases from Japan.



*"My goal with the canyon vase was to create a wabi-sabi vase with the feeling of complete zen"*

The structure of the vase is inspired by the Antelope Canyon. Antelope Canyon is a gorge located in the Navajo area near Arizona. The gorge has been shaped by water floods through the years creating its unique shape.

*"The unique shape of the Antelope Canyon is for me the essence of wabi-sabi, The imperfect perfect. I love that each angle can show a new perspective and aesthetic. And when the light hits the vase, it is where the magic shines through"*

Each piece is mouth blown into a heavily carved steel mold. It takes 3 skilled glass artists to create each piece by hand.



Item no. / 1333  
Name / Canyon Large - Clear  
Size / H 23 W 26 cm  
Material / Glass



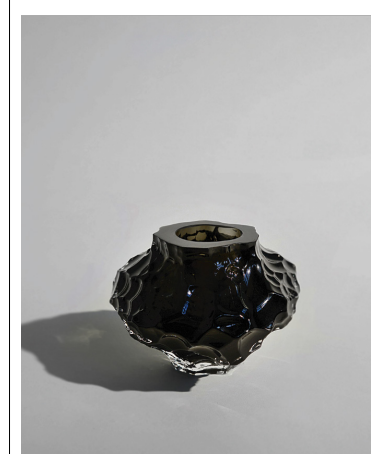
Item no. / 1518 /  
Name / Canyon Medi - Clear / New Smoke  
Size / H 18 W 20x14 cm  
Material / Glass



Item no. / 1335  
Name / Canyon mini - Clear  
Size / H 8 W 11 cm  
Material / Glass



Item no. / 1334  
Name / Canyon Large - New  
Smoke  
Size / H 23 W 26 cm



Item no. / 1336  
Name / Canyon mini - New Smoke  
Size / H 8 W 11 cm  
Material / Glass



Item no. / 1398  
Name / Canyon Large - Green  
Size / H 23 W 26  
Material / Glass

## Doublet Candleholder

Two silhouettes staged together, a pair, a couple, single or double, became the starting point of the Doublet candleholders. The versatile pieces lets you create personal spaces suited to everyday aesthetics.

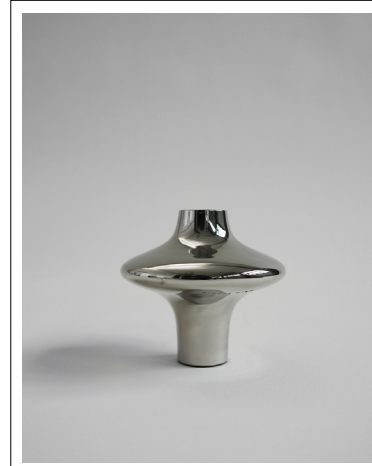
*" It was equally as important to create a timeless piece that could stand alone and yet still be staged beautifully together " - Rebecca*



Every candleholder is sandcasted in solid brass and polished by hand, creating the unique surface on each piece. Doublet candleholders comes in two colors and sizes, natural brass and brass with nickel finish.



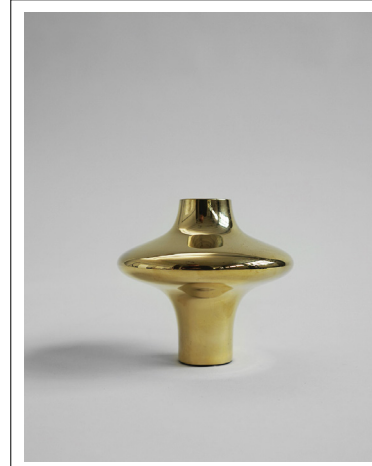
Item no. / Small 1349  
Name / Doublet Candleholders  
Silver Size / H 6,5 W 10 cm  
Material / Brass, nickel finish



Item no. / Large 1351  
Name / Doublet Candleholders  
Silver Size / H 9,5 W 10 cm  
Material / Brass, nickel finish



Item no. / Small 1350  
Name / Doublet Candleholders Gold  
Size / H 6,5 W 10 cm  
Material / Brass



Item no. / Large 1352  
Name / Doublet Candleholders Gold  
Size / H 9,5 W 10 cm  
Material / Brass

# Ostrea Collection

The Ostrea Vase is inspired by Infinite treasures of the sea. Light reflections of rock and oyster formations. Transformed to a organic collection of small objects. Created to beautify, ease and calm everyday living.

The final line on paper came to live in 2015 in the family's beach house. It was a small organic collection of a vase and a candleholder which was to be the first designs in the Hein Studio history.



The name Ostrea means Oyster. The Idea came from a walk at the beach with her daughter where they found oyster shells and stones shaped by the ocean.

*"The shape and structure captivated my creativity, and I felt the urge to create something unique but yet modern and functional"*

The Ostrea Vase was originally designed to be made in steel. Seeking out uniqueness and the urge to experiment with structure inspired by the ocean was the starting point of the Ostrea Vase in glass. The heavy steel mold was hand carved with great force, creating the unique surface.

Every vase is mouth blown, creating the unique raw surface and colors. It takes 3 skilled glass artists to blow each piece. The Ostrea glass vase comes in 6 different colors.



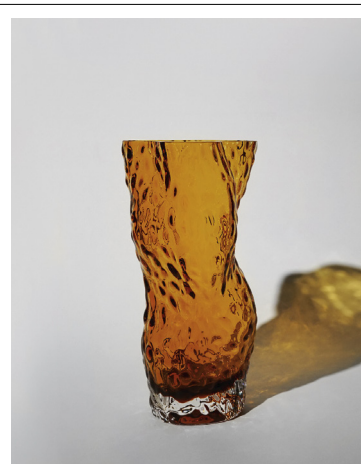
Item no. / 1106  
Name / Ostrea Vase - Clear  
Size / H 30 W 15 cm  
Material / Glass



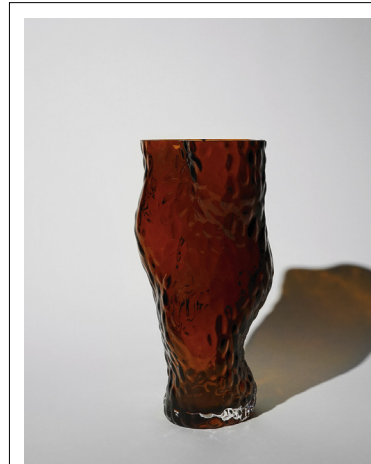
Item no. / 1109  
Name / Ostrea Vase - Pale Pink  
Size / H 30 W 15 cm  
Material / Glass



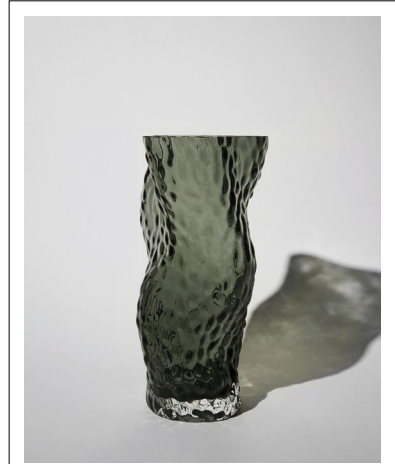
Item no. / 1111  
Name / Ostrea Vase - Smoke  
Size / H 30 W 15 cm  
Material / Glass



Item no. / 1105  
Name / Ostrea Vase - Amber  
Size / H 30 W 15 cm  
Material / Glass



Item no. / 1110  
Name / Ostrea Vase - Rust  
Size / H 30 W 15 cm  
Material / Glass



Item no. / 1108  
Name / Ostrea Vase - Midnight Blue  
Size / H 30 W 15 cm

# Ripple Bowl

We proudly introduce our new Ripple Bowl. Inspired by the waves and movement on the surface of water.

The contrast between the heavy marble and the soft shapes adds an extra element to your senses. A perfect statement piece for any home.

A study of water was the starting point of creating the Ripple Bowl says Hein Studio's Creative Director Rebecca Hein



*" I have always lived close to the ocean, it brings me peace. The ripple bowl is an expression of my appreciation of the sea. There is nothing like the sound of water that can bring my mind at ease, and to create a piece that can bring you closer to that state of mind was the goal "*

The contrast between the heavy black marble and the soft and smooth shapes adds an extra element to your senses. With a smooth touch it is the perfect statement piece for any home.

Created to ease and calm everyday living. Use as a bowl and fill it with greens or all your favorite things.

Each piece is carved and carefully hand polished to a matt smooth surface, and with our skilled manufacture we are able to create this unique piece that will make your everyday extraordinary.



Item no. / 1332

Name / Ripple Bowl

Size / W 30 x 30 x H 5 cm

Material / 100 % marble stone

## Ostrea 25 Vase

The Ostrea Vase is inspired by Infinite treasures of the sea. Light reflections of rock and oyster formations. Transformed to a organic collection of small objects. Created to beautify, ease and calm everyday living.

The final line on paper came to live in 2015 in the family's beach house. It was a small organic collection of a vase and a candleholder which was to be the first designs in the Hein Studio history.



The name Ostrea means Oyster. The idea came from a walk at the beach with her daughter where they found oyster shells and stones shaped by the ocean.

*"The shape and structure captivated my creativity, and I felt the urge to create something unique but yet modern and functional"*

Every vase is sandcasted and polished by hand, creating the unique surface. Ostrea 25 comes in two colors, natural brass and brass with nickel finish.



Item no. / 1355  
Name / Ostrea 25 - Silver  
Size / H 25 W 10 cm  
Material / Brass, Nickel Plated



Item no. / 1356  
Name / Ostrea 25 - Gold  
Size / H 25 W 10 cm  
Material / 100 % Brass

## Unity Candleholder

The Unity Candleholder was created from the search, for the perfect functional art piece. Each angle shows a new perspective, it creates a new experience depending on the light reflections. Elevate any home and use it with two candles or without as an art piece.

*" I wanted to create a candleholder from a new perspective, with a new experience from every angle. A functional art piece that could last for generations to come " - Rebecca*



Every candleholder is sandcasted in solid brass and polished by hand, creating the unique surface on each piece. The unity candleholder comes in two colors, natural brass and brass with nickel finish.



Item no. / 1353  
Name / Unity Candleholder Silver  
Size / H 14 W 15x12 cm  
Material / Brass, nickel finish



Item no. / 1354  
Name / Unity Candleholder Gold  
Size / H 14 W 15x12 cm  
Material / Brass

# Ripple Knob

Ripple knob is created as a place to hang all your favorite items. Inspired by the waves and movement on the surface of water. The contrast between the hard material and the soft shapes adds an extra element to your senses.

*"The ripple knobs is for still life displays, for everyday surroundings, whether that's objects or clothing. Designed to be used in personal and creative ways" - Rebecca*



As an extension of the ripple bowl it started as a study of water and the movement on the surface of water.

*" I have always lived close to the ocean, it brings me peace. The ripple knobs is an expression of my appreciation of the sea. There is nothing like the sound of water that can bring my mind at ease, and*

*to create a piece that can bring you closer to that state of mind was the goal "*

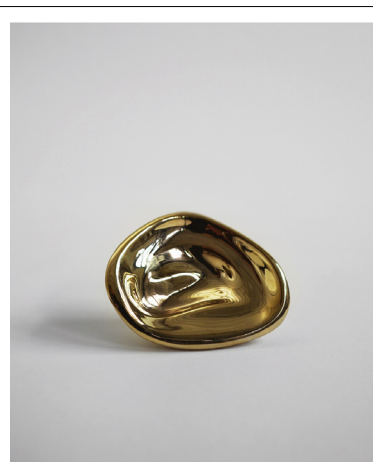
Every knob is sandcasted and polished by hand, creating the unique surface. Ripple knob comes in two colors and sizes, natural brass and brass with nickel finish.



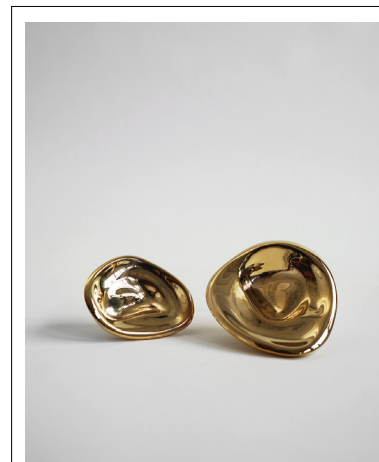
Item no. / Small 1345  
Name / Ripple Knob Silver  
Size / W 6,5x8 H 4 cm  
Material / Brass, nickel finish



Item no. / Large 1347  
Name / Ripple Knob Silver  
Size / W 9x9,5 H 4,5 cm  
Material / Brass, nickel finish



Item no. / Small 1346  
Name / Ripple Knob Gold  
Size / W 6,5x8 H 4 cm  
Material / Brass



Item no. / Large 1348  
Name / Ripple Knob Gold  
Size / W 9x9,5 H 4,5 cm  
Material / Brass

# Plaids

With a timeless design our wool plaids are created to be durable and practical, yet still cosy and soft against the skin.



Comes in three classic designs to fit any home aesthetic. They're designed for use both in and out of the home. Made in a thick weave to provide warmth and comfort.

Made from 100 % New Zealand wool OEKO-TEX® & Woolmark Certified



Item no. / 1341  
Name / Aiyana Plaid no. 01  
Size / W 130 x H 180 cm  
Material / 100 % NZ wool



Item no. / 1342  
Name / Aiyana Plaid no. 02  
Size / W 130 x H 180 cm  
Material / 100 % NZ wool



Item no. / 1343  
Name / Ihalo Plaid no. 01  
Size / W 130 x H 180 cm  
Material / 100 % NZ wool



## De la mer fine jewelry

Organic shapes of the sea and lines characterize the collection. The delicate shapes draws parallels to underwater shells that has been shaped by mother nature.

Each piece is handmade in 925 sterling silver and polished by hand and stamped HE 925 according to the danish association of fine jewelry controls.



The broach has detachable charms, a Freshwater Baroque Pearl, Silver Piece and a Green Malachite.

Every piece comes with a black velvet dust bag and linen gift box for safe keeping for years to come.



Item no. / 1357  
Name / De la mer Necklace  
Size / L 42 W 1,2 cm  
Material / 925 Sterling Silver



Item no. / 1358  
Name / De la mer Bracelet  
Size / L 21 W 1,2 cm  
Material / 925 Sterling Silver



Item no. / 1359  
Name / De la mer Broach  
Size / W 5 x 5,5 H 1 cm  
Material / 925 Sterling Silver

# Awena Scarfs

Vibrant colors and a graphic classic signature H pattern defines the Awena collection.  
Use together with your everyday uniform.



Made from 100% pure twill silk in Italy with handstitched edges.



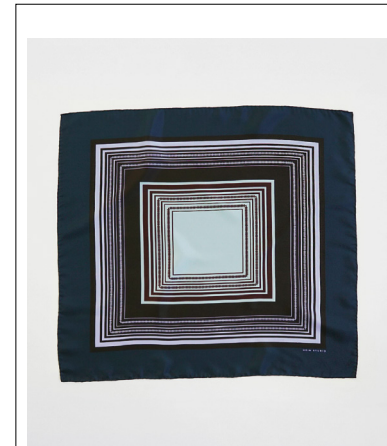
Item no. / 1337  
Name / Awena Scarf no. 01  
Size / W 70 x 70 cm  
Material / 100 % Silk



Item no. / 1338  
Name / Awena Scarf no. 02  
Size / W 70 x 70 cm  
Material / 100 % Silk



Item no. / 1339  
Name / Awena Scarf no. 03  
Size / W 70 x 70 cm  
Material / 100 % Silk



Item no. / 1340  
Name / Awena Scarf no. 04  
Size / W 70 x 70 cm  
Material / 100 % Silk

# Meconopsis lighting

Meconopsis lighting collection is the first series of lighting from Hein Studio.

A timeless collection with two lampshades combined to reflect the light softly and created to light up the corners of your home. Aesthetic minimalism combined with brass, steel and onyx.

Heavy layered lampshades hanging on a brass string, inspired by the delicate flower meconopsis



Item no. / 1073  
Name / Meconopsis Onyx Table  
lamp Size / H 48 x W 36x36 cm  
Material / Brass - Onyx



Item no. / 1074  
Name / Meconopsis Onyx Wall  
lamp  
Size / W 30x30 x H 20 cm



Item no. / 1003  
Name / 3427 Pendel  
Size / W 34 x H 27-60 cm  
Material / Brass